

Naddon Shop Floor Control

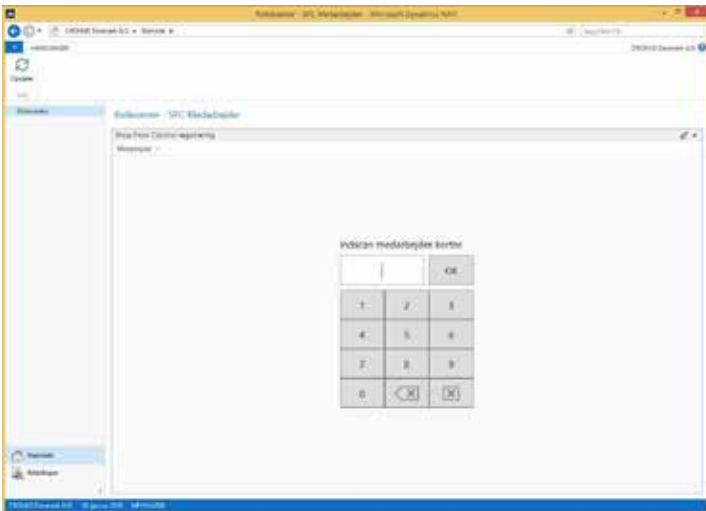
Overview of ongoing production orders, job tasks and service orders.

With Shop Floor Control, management and foremen have their finger on the pulse of the production environment. The ongoing registration ensures a complete overview of current production orders, job tasks, service orders, clock-in and out, and absence.

The Shop Floor Control registration method is designed with simplicity in mind, so that the employees who make the registrations see this as a natural part of their work process. The user-friendly menus and dialogs provide great security against incorrect entries.

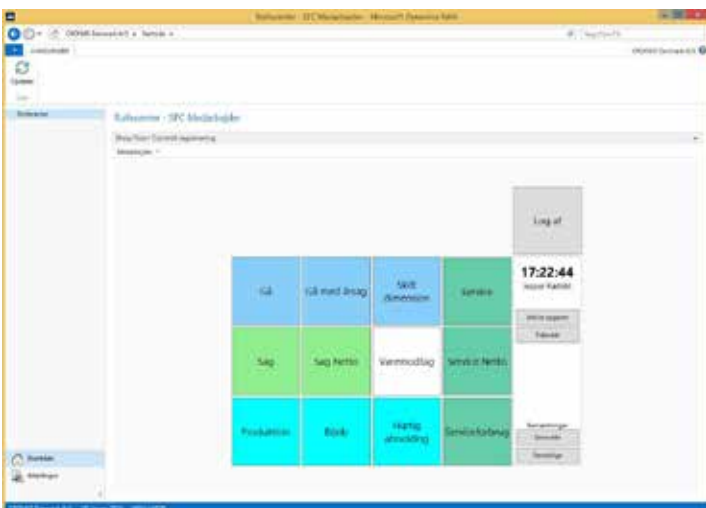
By means of the approval pages, the foremen are able to check, correct and approve clock-in and out registrations. The approvals form the basis of the payroll processing.

Clock-in and out registration



- Easily understandable registration menu.
- Large buttons, touch or mouse operated.
- Clock-in and out registration, including reasons for absence.
- Login with code, magnetic card or barcode.
- General or personal remarks displayed at login.
- Change of department at different job tasks.
- Display of daily schedule and hour balance.
- Display of active jobs.
- Time capture for production orders and registration of secondary jobs.
- Reporting of production quantity and consumption.
- For job tasks, time capture and registration of net time.
- For service orders, time capture and registration of net time and consumption.
- Cancellation of the production number and consumption.
- Receipt of goods.

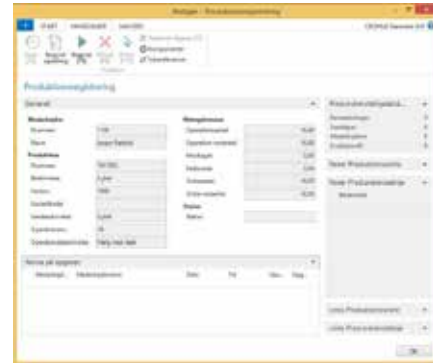
Start and stop registration



Selected functionality

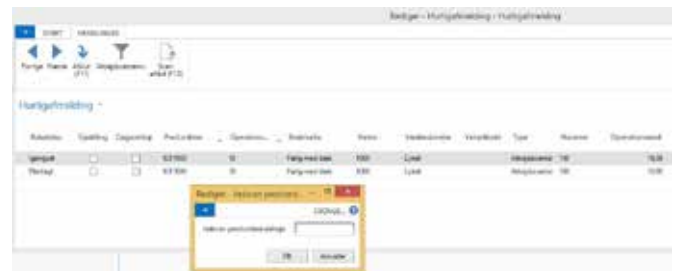
Production registration

By means of six buttons, the production order can be updated with Setup time, Start time, and Stop time. Work on the production order can be Interrupted or Completed. Output can be recorded continuously.



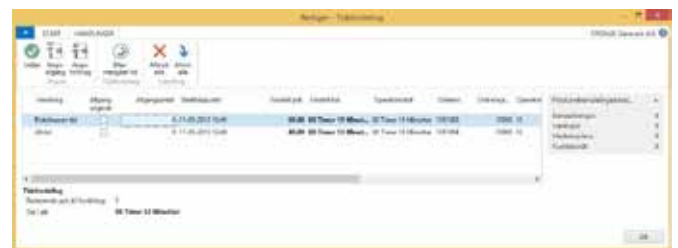
Quick Entry

Quick entry Completes operations for which time is not to be registered. The operation is scanned or marked, after which the operation is automatically reported with the desired quantity.



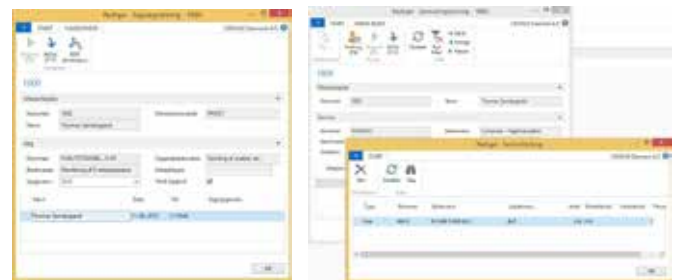
Allocations

In the case of multiple concurrent production orders, these may be initiated at the same time, and when the production orders are completed separately or collectively, the working hours can be distributed between the production orders in percentages or by specifying the time spent.



Jobs

Use time capture to register blacksmith's and electrician's work or prototype development, for instance. Jobs can be registered both real-time and net.

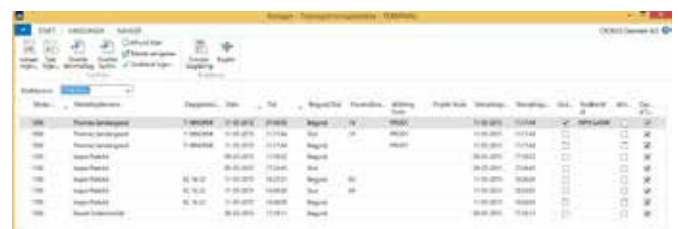


Service

The service engineers can register service jobs both real-time and net. The time spent on each service order is registered continuously or at completion.

Approval

The foreman can approve the clock-in and out registrations with the option of rounding times and marking deviations in relation to the daily schedule. The simulation of the posting carries out the final check before the working hours are transferred to Lessor Time & Attendance and Payroll.



Technical details

- Microsoft Dynamics NAV 2015, 2013 R2, 2013, 2009 R2, 2009 SP1 and 5.00.SP1
- Certified for Microsoft Dynamics (CfMD).
- LESSOR Time & Attendance has to be installed in order for Naddon Shop Floor Control to work.